

[Create Request](#) | [Personal Account](#)[SOLUTIONS](#) [RENEW](#) [DOWNLOADS](#) [SUPPORT](#) [RESOURCE CENTER](#) [PARTNERS](#) [ABOUT KASPERSKY LAB](#)

English (Global) ▼

[Home](#) → [Support](#) → Safety 101[Product Select](#) [Sources of threats](#) [Types of threats](#) [Signs of infection](#) [General information](#) [PC Safety](#) [Virus-fighting utilities](#) [Viruses and solutions](#)

Safety 101: Virus-fighting utilities

The ShadeDecryptor tool for fighting Trojan-Ransom.Win32.Shade

[Back to "Virus-fighting utilities"](#)

2016 Jul 04 ID: 13059

The **Trojan-Ransom.Win32.Shade** malware encrypts the files on the user's computer and makes them inaccessible. To decrypt such files, we have developed the **ShadeDecryptor** tool.

ShadeDecryptor can decrypt the files with the following extensions: **.xtbl**, **.ytbl**, **.breaking_bad**, **.heisenberg**.

First, the tool searches for the decryption key in its database. If the key is present in the database, the files are decrypted and become accessible. If the key is not present in the databases, the tool sends the request to the server in search for additional keys. This action requires access to the Internet.

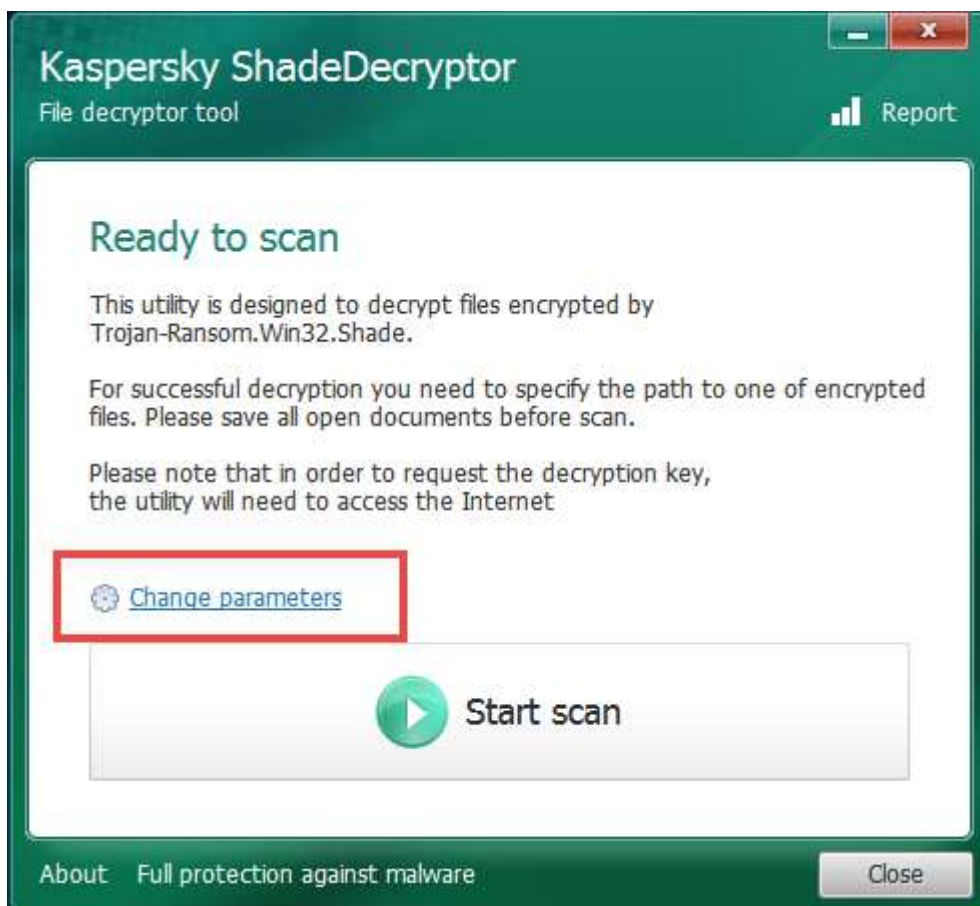
How to decrypt files

To decrypt the files:

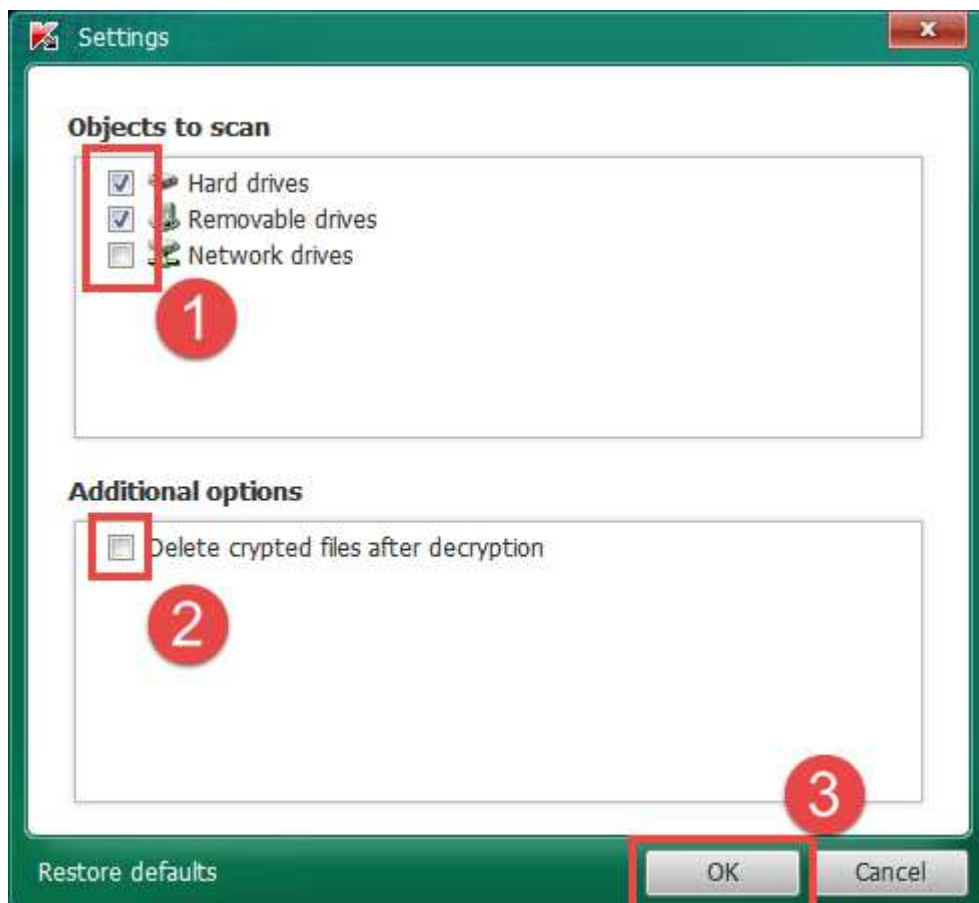
1. Download the [ShadeDecryptor.zip](#) archive and extract the files using a file archiver (for example, **7zip**).
2. Double-click the **ShadeDecryptor.exe** file.



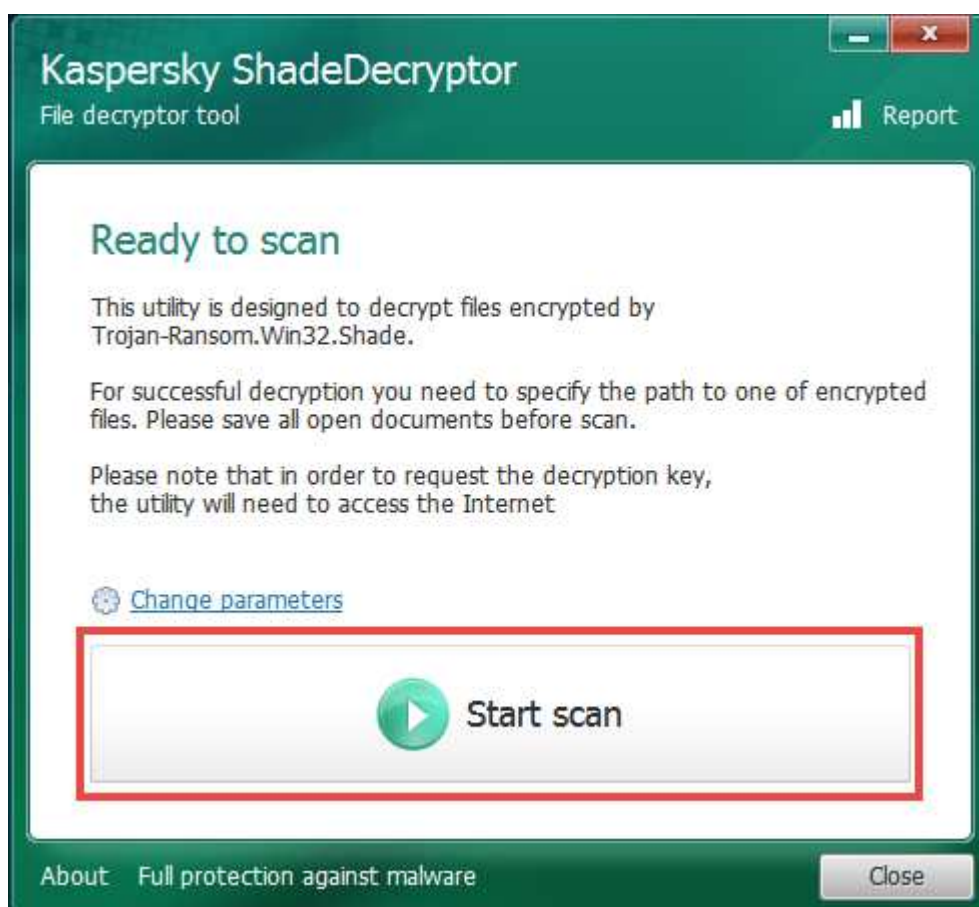
3. In the **User Account Control (UAC)** window, enter the administrator password and click **Yes**.
4. In the **Kaspersky ShadeDecryptor** window, specify the scan scope by clicking **Change parameters**.



5. In the Settings window, select the drives to scan in the **Objects to scan** section. To delete the encrypted files after scan, select the check box in the **Additional options** section.
6. Click **OK**.



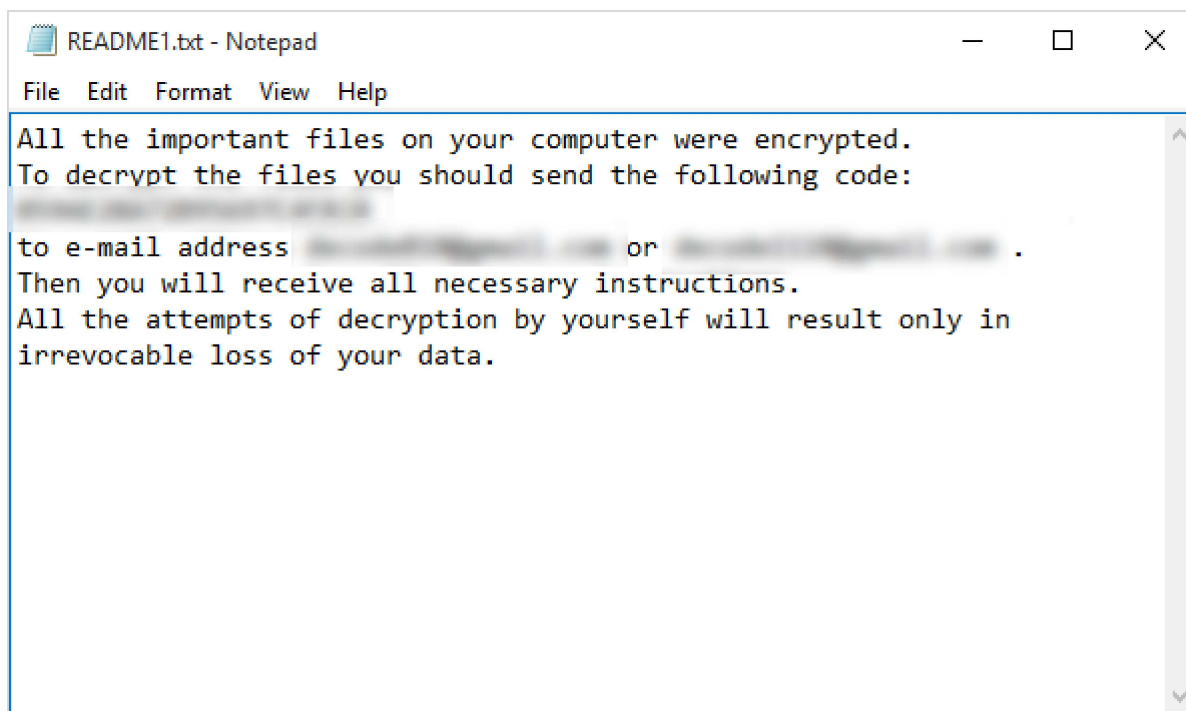
7. In the **Kaspersky ShadeDecryptor** window, click **Start scan**.



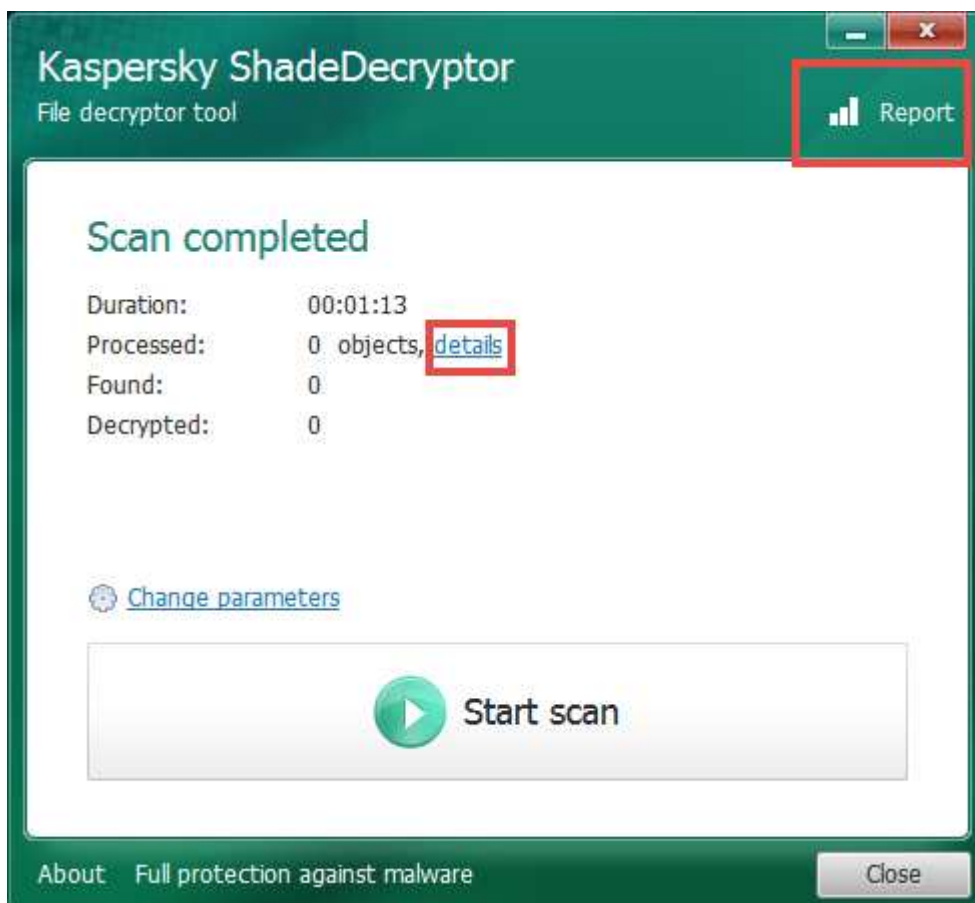
8. In the window **Specify the path to one of encrypted files**, select the location of one of the files.

9. Click **Open**.

10. If the tool is unable to detect the infection identification, it will request a path to the **readme.txt** file.



11. To view the information about the scan, click the **details** link.
12. To view the history of performed scans, click **Report** in the upper-right corner of the **Kaspersky ShadeDecryptor** window.



Was this information helpful?

[Yes](#) [No](#)

[Back to "Virus-fighting utilities"](#)

Support for Home

[Consumer Support Contacts](#)

[Contact support via My Kaspersky](#)

[Knowledge Base for Home](#)

[How-to Videos](#)

[Forum](#)

Virus-fighting tools & services

[Scan file or URL for viruses](#)

[Report a false alarm](#)

[Kaspersky Virus Removal Tool](#)

[Kaspersky Rescue Disk](#)

[Other virus-fighting tools](#)

Support for Small Business

[Small Business Support Contacts](#)

[Contact support via My Kaspersky](#)

[Knowledge Base for Small Business](#)

[Forum](#)

Software Downloads

[Buy online](#)

[Renew license](#)

[Get updates](#)

[Free trial download](#)

[Support terms and conditions](#)

[\(updated April 12, 2017\)](#)

Support for Business

[Business Support Contacts](#)

[Contact support via Company Account](#)

[Knowledge Base for Business](#)

[Product Support Lifecycle](#)

[Premium Support Plans](#)

[Licensing by Subscription](#)

[Forum](#)

[Online Trainings](#)

[Subscribe to news](#)

[Site Feedback](#)

© 2018 AO Kaspersky Lab. All Rights Reserved.

[Privacy Policy](#) [Contact Us](#) [About us](#)

•

-

Have you found what you were looking for?

Please let us know how we can make this website more comfortable for you

Send feedback [Send feedback](#)

Thank you!

Thank you for submitting your feedback.
We will review your feedback shortly.